



Bead Origami Presents...

Little Whirls

Created by Cindy Holsclaw
www.beadorigami.com

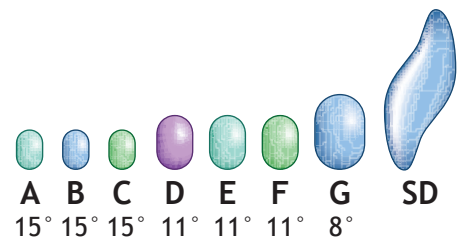


Stitch little whirls with StormDuo beads, and decorate them with intricate layers of seed beads!

Materials for the bracelet (7 1/2" / 19cm long):

- 2.5 g 15° Japanese seed beads* (A)
- 0.5 g 15° Japanese seed beads (B)
- 1 g 15° Japanese seed beads (C)
- 2.5 g 11° Japanese seed beads (D)
- 1 g 11° Japanese seed beads (E)
- 1 g 11° Japanese seed beads (F)
- 1.5 g 8° Japanese seed beads (G)
- (45) StormDuos (SD)
- (1) 6mm magnet clasp
- Fireline thread, 6 lb test

**I recommend the Miyuki brand for the 15° and 11° seed beads.*



The beads used in this project

Tools:

- Beading Needle, size 11-12
- Scissors



Notes on Illustrations:

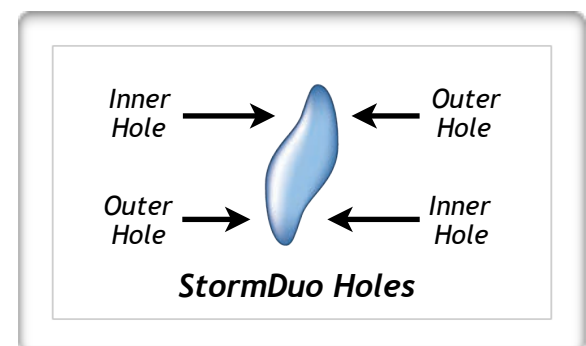
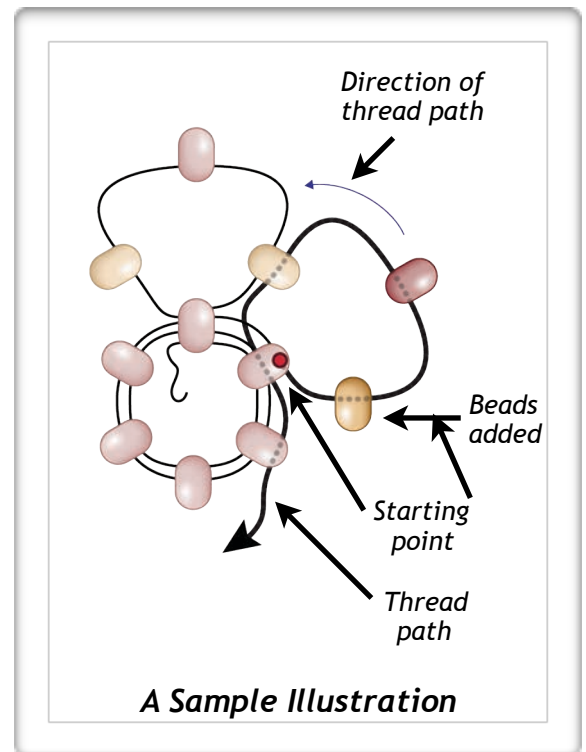
- Each step of this pattern has at least one **figure** or **photo** that shows the beadwork in the corresponding step. *Figure 1 goes with Step 1, Figure 2 goes with Step 2, etc.*
- A **red dot** marks the starting point of each step.
- Any beads added during a given step are more **saturated** than those already in the beadwork.
- A **dotted line** marks the thread path of beads picked up or passed through during a given step. The thread path of the current step is a thick line; any thread paths from previous steps use a thinner line.
- A **blue arrow** is sometimes used to indicate the direction of the thread path.

Notes on the Text:

- The *text accompanies the illustrations* and is not intended to be read without them; look at the corresponding figure(s) or photo(s) while reading the text.
- Pay extra attention to the **red text**.

Other Tips:

- Each hole of a StormDuo has an **outer side** and an **inner side**. When picking up your StormDuos, be sure to pick them up from the noted side.
- Keep your thread tension firm, but not so tight that the beads are locked in place.
- Mark the beads on your work surface with a post-it note to keep track of them. Some beaders like using alphabet beads too.
- Avoid forcing the beading needle through a bead; this could break the bead or the needle! Instead, try switching to a smaller size needle.
- Silver seed beads will tarnish over time. To slow this process, store pieces containing silver seed beads in an airtight container with an anti-tarnish strip.





Stitching the base

Step 1: First you'll stitch the base of the first whirl. On a comfortable length of thread, pick up **1G** and **1SD** (though an **outer hole**). Repeat picking up these beads a total of five times. Pass through all the beads again, leaving a 6" tail, and exit through the third G.

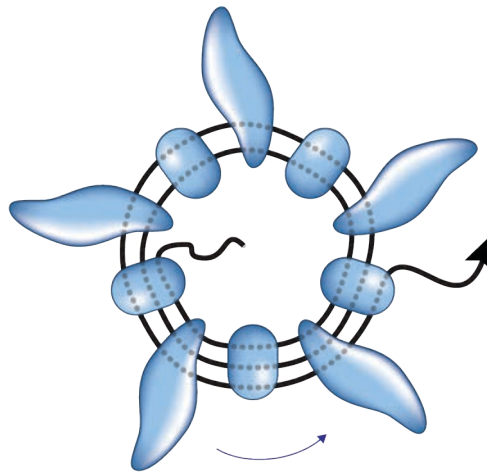
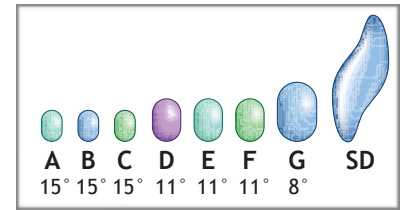


Figure 1
Base Whirl



Step 2: Next you'll stitch the connecting beads between the whirls. Pick up **11D**, **1G**, and **11D**. Pass through the G that you exited from at the beginning of this step again; pass through the next 5D, skip the next D, and pass through the next 5D, G, and 5D. Skip the next D, and pass through the next G, 10D, and G.

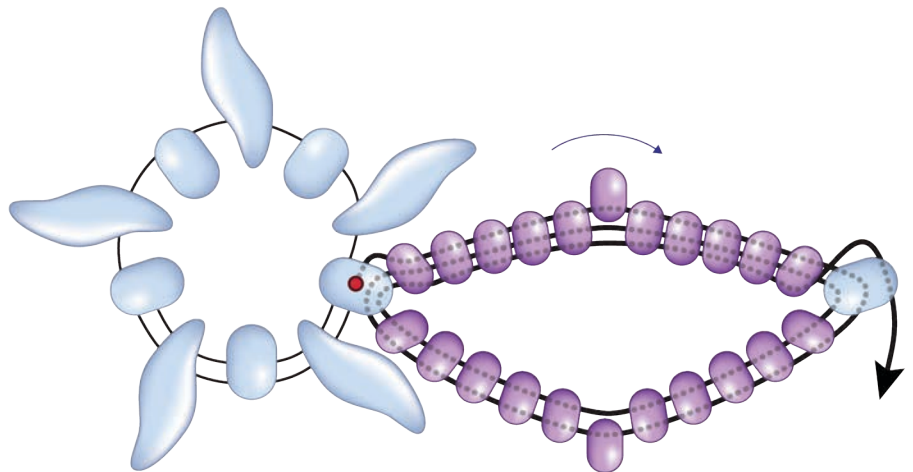


Figure 2
Base Connection

Step 3: To stitch the base for the next whirl, pick up **1SD** (though an **outer hole**) and **1G** until you have four G on your thread, and pick up **1SD** (outer hole). Pass through the G that you exited from at the beginning of this step and continue through the next SD, G, SD, and G.

Repeat Steps 2-3 until your bracelet is the desired length, leaving about half an inch for the clasp.

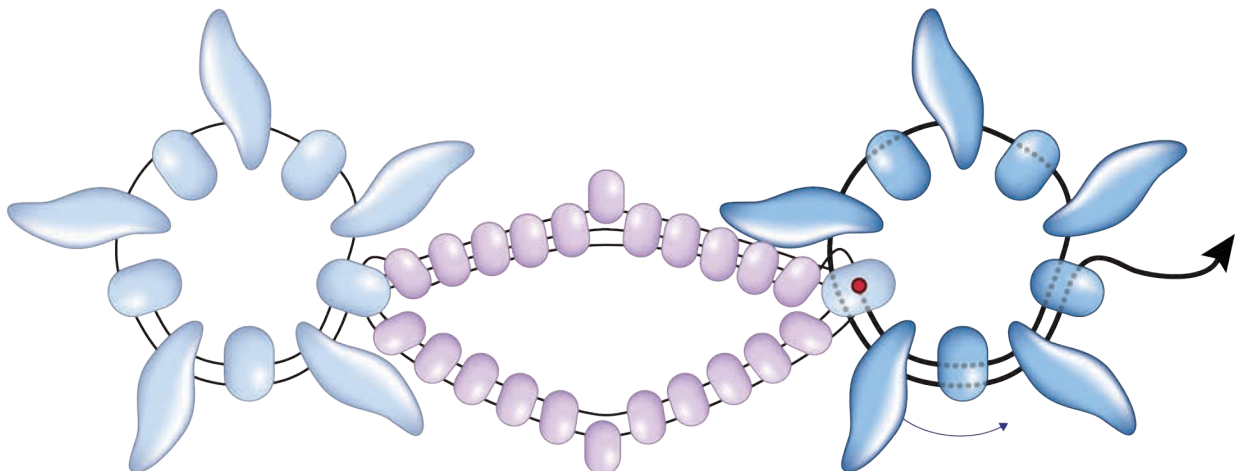


Figure 3
Second Whirl

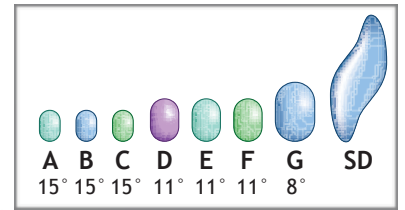


Photo 3
Bracelet Base

Embellishing the whirls

Step 4: Next you'll embellish each whirl with additional seed beads. With your working thread exiting a G right up against an outer hole of an SD, pick up 3A. Pass through the other hole of this SD, and pick up 3A. Pass through the next G. Repeat a total of five times, and pass through the first 3A.

Step 5: Pick up 2A, 1E, and 3A. Skip over the top of the SD, and pass through the next 3A, G, and 3A. Repeat a total of five times, exiting through a G.

Step 6: Pass through the next 5A, skip the next E, and pass through the next 6A and G. Repeat a total of five times to bring all the "E" beads to points at the tips of the SDs.

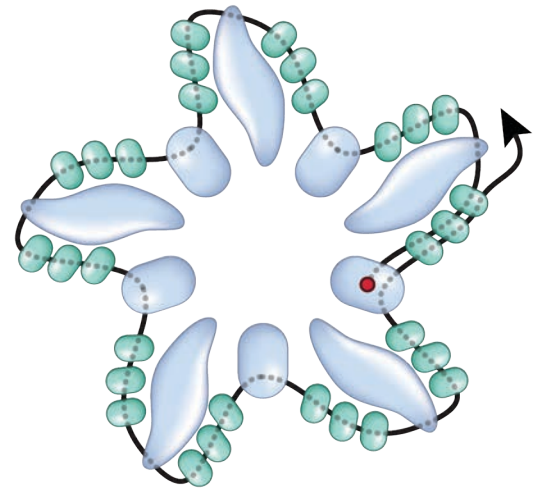


Figure 4
Whirl Embellishment

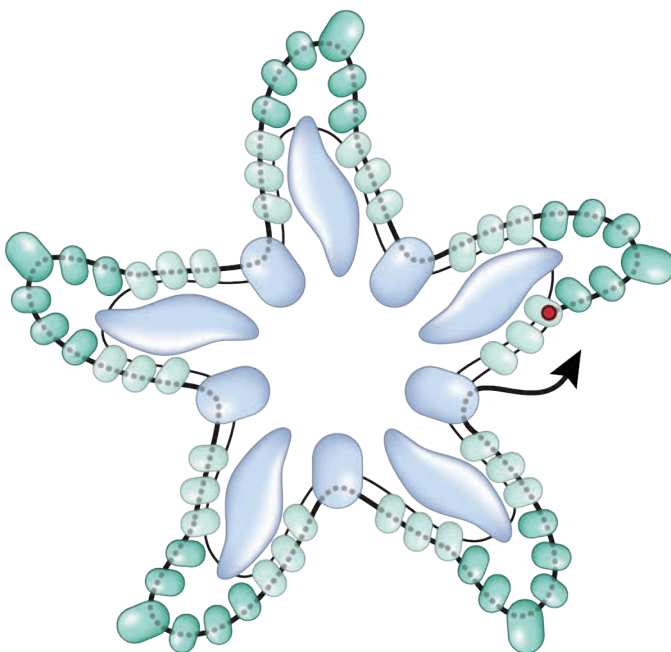


Figure 5
Whirl Embellishment

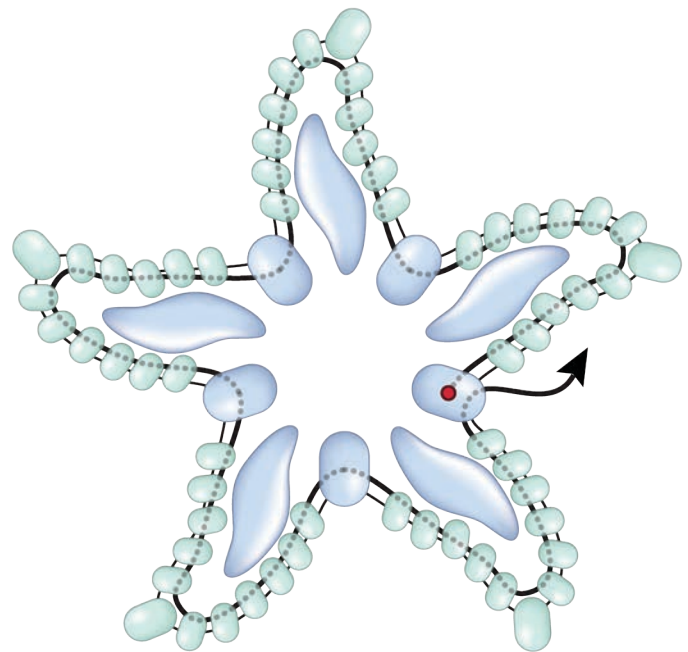
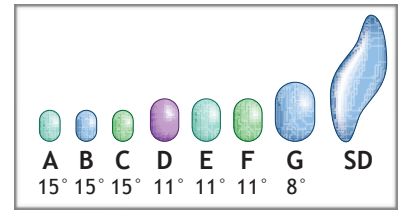


Figure 6
Whirl Embellishment



Step 7: To embellish the center of the whirl, pick up **1F** and pass through the next G. Repeat five times and exit through the first F.

Step 8: Pick up **1B** and pass through the next F. Repeat five times, and *pass through all the B in a circle*. Exit through an F.

Step 9: Pick up **1C, 1F, and 3C**. Pass through the next F. Repeat a total of five times.

Step 10: Pass through the next C, skip the next F, and pass through the next 3C and F. Repeat a total of five times to bring the “F” beads to points.

Weave through the beadwork to the next whirl, and repeat Steps 4-10 on the remaining whirls of the bracelet. With each repeat of Step 4, *check to make sure that you’re exiting the correct direction* at the beginning of the step (exiting a G right up against an outer hole of an SD).

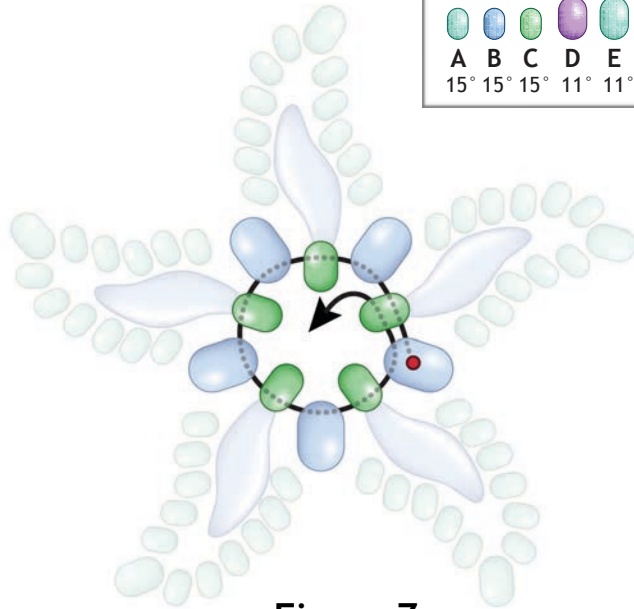


Figure 7
Center Embellishment

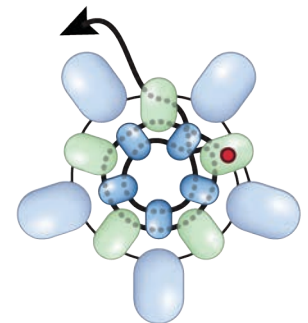


Figure 8
Center Embellishment

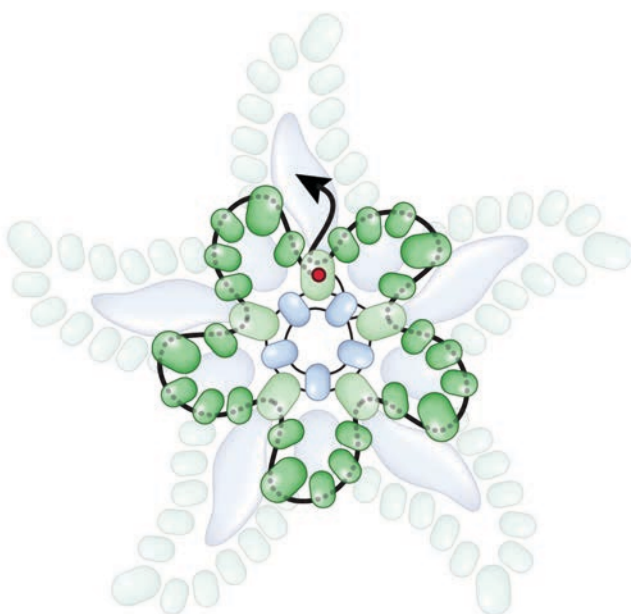


Figure 9
Center Embellishment



Figure 10
Center Embellishment



Adding the clasp

Step 11: To add the clasp, exit a G on the end of the bracelet. Pick up **3D**, one half of the clasp, and **3D**. Pass through the G and the next D, skip the next D, pass through the next D, clasp, and D, skip the next D, and pass through the next D and G. Weave through several beads to secure your thread, and trim.

Repeat on the other end of the bracelet. Your Little Whirls Bracelet is complete!

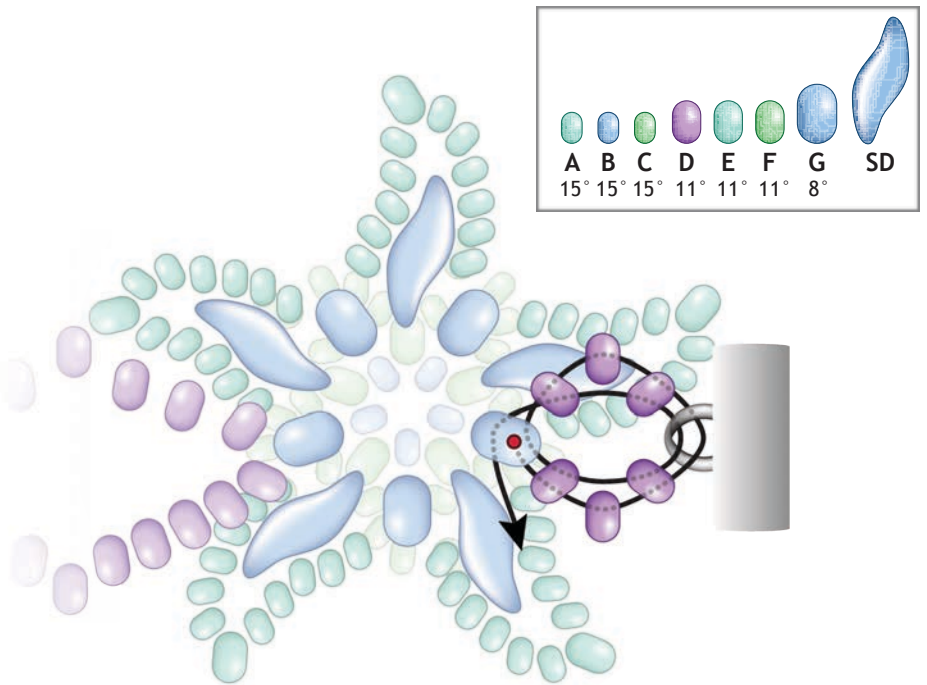


Figure 11
Adding the Clasp



Contact Information

For questions or comments,
 please e-mail beadorigami@gmail.com

Thanks for reading this pattern! Creating beading projects and teaching them to people like you is how I make my living. If you're interested in more beading designs like this one, please visit my website and consider signing up for my mailing list at www.beadorigami.com/contact.html - Mailing list subscribers receive monthly updates on the latest and greatest Bead Origami patterns, kits, and workshops, as well as exclusive discount codes!